

V9.1/V10 Dual Mode Upgrade

What is it?

The Dual Mode upgrade will enable the V9.1 and V10 cameras to display higher quality images at half the maximum recording speed.

V9.1 Standard Mode = 1632x1200 / 1,016pps

V9.1 Enhanced Mode = 1632 x 1200 / 508pps

V10 Standard Mode = 2400x1800 / 480pps

V10 Enhanced Mode = 2400x1800 / 240pps

[Note; this upgrade is NOT available for the V9.0 model camera]

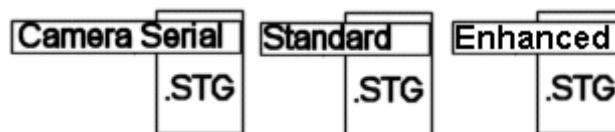
How is it implemented?

The Dual Mode upgrade is implemented via a Firmware update, and a slight hardware change. Also, an updated version (ph642) of the Phantom software is required.

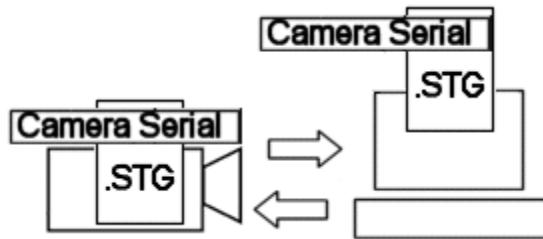
What is the customer interface to the capability? (How to use it)

Each Phantom camera has a unique serial tag number file. This file is known as the camera's .stg file. The .stg file contains factory calibrations and settings essential for the proper operation of your Phantom camera. The file is found in the Phantom directory, and is named for the serial number of your camera (ex: 1234.stg)

With Dual-Mode, the Phantom Cameras .stg file is updated with one of two sets of settings, one calibrated for standard operation of the camera, and a second calibrated to enable the enhanced settings.



Although you will find three .stg files in your Phantom directory, the camera will always read from the .stg file named for the serial number of your camera

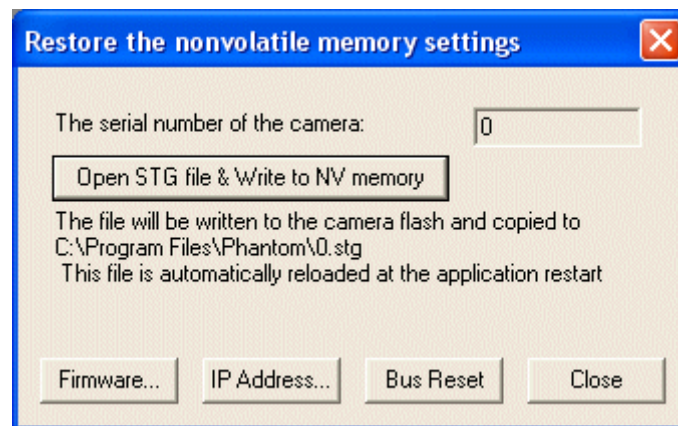


To switch between Standard and Enhanced mode, follow the steps bellow:

Select "Restore NV Memory" from the Acquisition menu of the Phantom Camera Control software.



Make sure that all three .stg file are present inside the Phantom directory, then press the "Open STG file and Write to NV memory" button



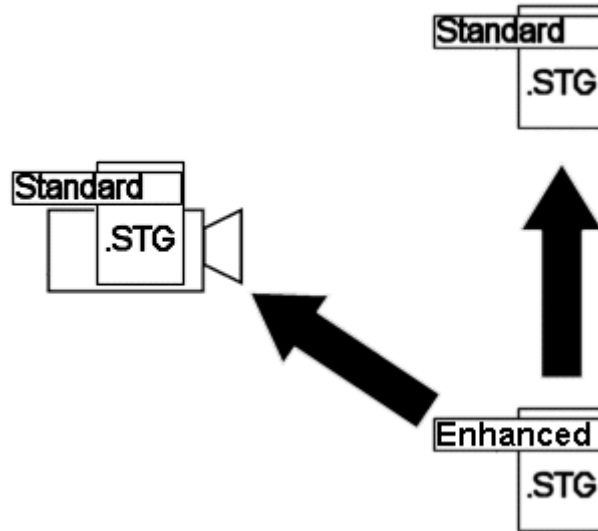
Navigate to: **C:\Program Files\Phantom** and select the proper .stg for the mode you wish to enable:

1234_Standard.stg - Choose this .stg file to enable Standard mode

1234_Enhanced.stg - Choose this .stg file to enable the Enhanced mode

1234.stg - .stg file holding the current camera settings. Do not select.

When you choose the .stg file, the Phantom software then uploads its calibration settings to the cameras NV memory, and overwrites the settings to the standard .stg file in the Phantom directory



Changing from one mode to another is simply a matter of loading the correct .stg file.

Is there any cost involved for this upgrade?

No. This upgrade will be done at no cost

Are all new v9.1 and v10 cameras shipping with this standard?

Yes. Dual mode is now standard on all V.9.1's and v10's

What firmware revision supports it?

Firmware 431 and higher supports dual mode

What software revision supports it?

Phantom Software Version ph642 and above

How does a customer know if they have the capability on a camera?

They would have to look for three .stg files in the Phantom directory. Also, when Enhanced mode is enabled, it shows up as “half clock” in the cine info.

Can existing customers upgrade to this capability If so, how?

Yes, they would simply need contact their local sales rep to have an RMA issued to return the camera for upgrade.